

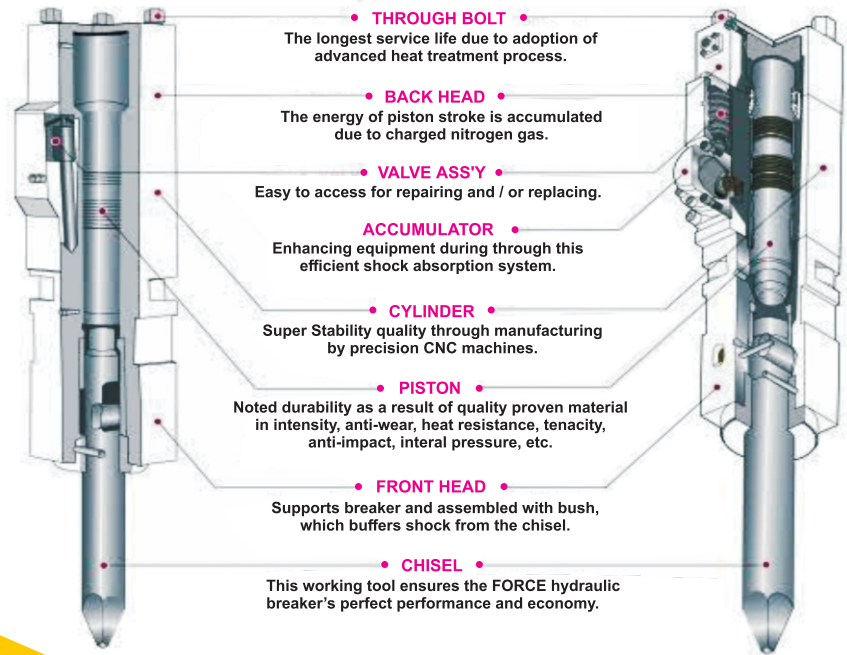


**FORCE
BREAKER**

**QUALITY IS
NOT AN ACT
IT'S OUR
HABIT**

FORCE

- ▶ **OUTSTANDING POWER TO WEIGHT RATIO**
- ▶ **HIGH PERFORMANCE WITH QUALIFIED CONTROL VALVE**
- ▶ **TOP CLASS "LESS NOISE" (BOX FRAME TYPE)**



APPLICATIONS :

- Building renovation
- Landscaping, gardening
- Trenching
- Demolition,
Non-reinforced concrete
- General Construction works



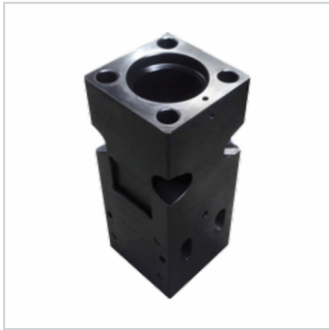
SPECIFICATION

Model	Opening Weight (Kg)	Operating Oil Flow (l/min)	Operating Pressure (Bar)	Impact Rate (bpm)	Rod Diameter (mm)	Weight of base Machine
FB-45	120	20-40	90-120	700-1200	45	1.2-3
FB-70	280	40-70	110-140	450-700	68	4-7
FB-75	365	50-90	120-150	450-650	75	6-9
FB-85	565	60-100	130-160	400-650	85	7-12
FB-100	815	80-110	150-170	400-600	100	11-16
FB-140	1740	120-180	160-180	350-500	140	18-26
FB-155	2490	180-240	200-220	300-500	155	28-35
FB-165	3015	190-250	200-220	300-450	165	30-45
FB-175	3891	210-290	200-220	300-400	175	40-55

Superior Quality Alloy Steel Provides Excellent Durability Hydraulic-Gas Power System

- Pressurized N2 gas in main power cell is to operate with less demand on the base machine's hydraulic power fewer components.
- Minimized inner parts help easy maintenance with low cost underwater kit (optional)

SPARES



Front Head



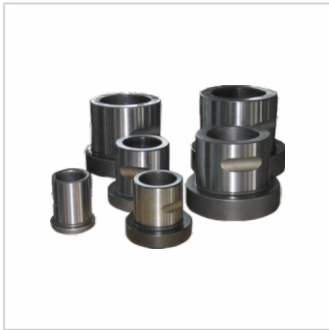
Cylinder



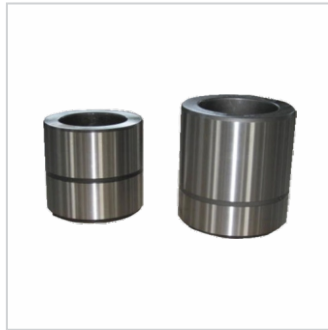
Back Head



Piston



Front Cover Bush



Ring Bush



Gas Charging Kit



Seal Kit



Through Bolt



Chisel



Spool Valve



Rod Pin & Stop Pin

Double Locking Quick Coupler



Quick Coupler are used in hydraulic excavators and backhoe loaders. This is ideal tool to mount the various attachment easily

DESIGN

- Operator friendly function enabled
- Well-Balanced Frame with fewer components.
- Korean Technology best Quality Control valves, piston.

MAINTENANCE

- Easy to use
- Lower cost to maintain with a good durability
- Superior Quality Alloy Steel for Main Power Cell Parts.

SERVICE

- Quicker and better after Sales-Service
- Buyer technical support program
- Dealer Marketing support program



FORCE MACHINERY INDIA PVT. LTD.,

Plot No.6, Sr. No. 296/297, Near Om Forge,
MIDC, Ahmednagar-414111(MH)

Contact No.: 8530472111, 8530474333, 9028134777

Email.: sales@forcemachineryindia.com / info@forcemachineryindia.com
www.forcemachineryindia.com

Branch Office

Bhopal | Bangalore | Ahmedabad | Jharkhand | Nagpur
Mumbai | Pune | Bhilwara | Raipur | Jaipur | Delhi



* Disclaimer: Pictures, diagrams and specifications have been used for representational purpose only. The above specifications, designs and pictures are subject to change without any prior notice for quality and product improvement.